



Newsletter - 6th October 2023

## 300 Years Celebration



As you will be aware, Sytchampton Endowed Primary School and Ombersley First School are 'Voluntary Aided Schools', both of which were established by the Lloyds Educational Foundation (originally known as Richard Lloyd's Charity) to support less affluent workers and families in our local area. The Charity was established exactly 300 years ago on 17th October 1723 and the Foundation continue to support both schools. For more information about the charity, please visit:

<https://www.allaboutomersley.com/lloyds-educational-foundation>

[http://www.sytchampton.worcs.sch.uk/web/the\\_history\\_of\\_sytchampton\\_endowed\\_primary\\_school/648913](http://www.sytchampton.worcs.sch.uk/web/the_history_of_sytchampton_endowed_primary_school/648913)

To celebrate the 300 Year Anniversary of the founding of the charity, both schools are holding a Celebration Day on 17th October 2023. We will be spending the day researching life in and around our schools in the 1700's and 1800's and we will be using some of the original artefacts we have stored in school!

We would love it, if all pupils could dress up for the day in costume from the 1700's or 1800's. Please remember that the schools were originally established for the rural families and farm workers in the area,

so the children came from very poor families. Indeed, the chartiy provided all of the equipment and books for the pupils, as well as providing free schooling (which was unheard of back then!).

So, costumes do not need to be elaborate! We have added some photos below of the types of things you might consider.

The Lloyds Educational Foundation are also paying for every pupil to have a commemorative pin badge on the day and will be presenting a plaque to both schools.





## School Equipment



Over the past few weeks, we have been conducting an evaluation of our teaching and learning and our Learning Environment as part of our continuous improvement work.

We have noticed that there is an increasing number of pupils bringing in pencil cases, stationery and toys etc into school this year.

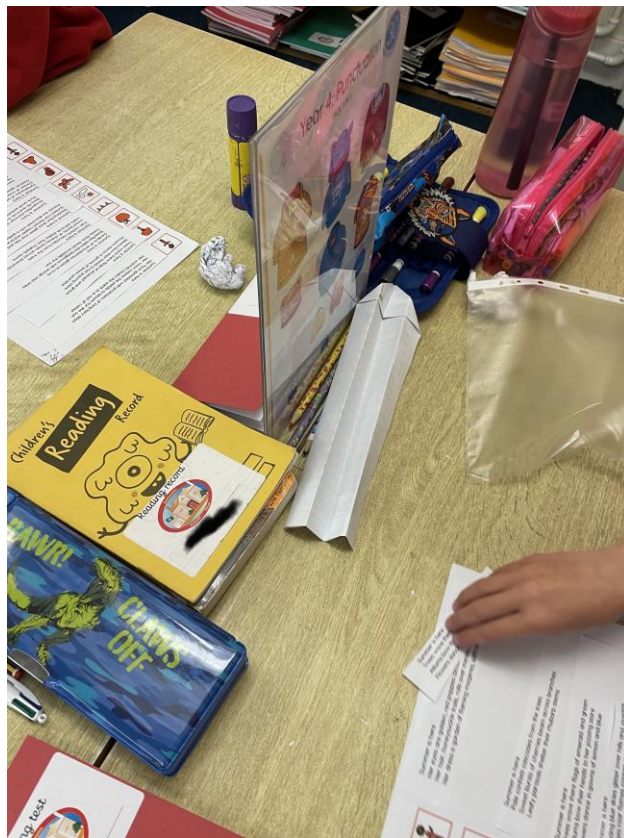
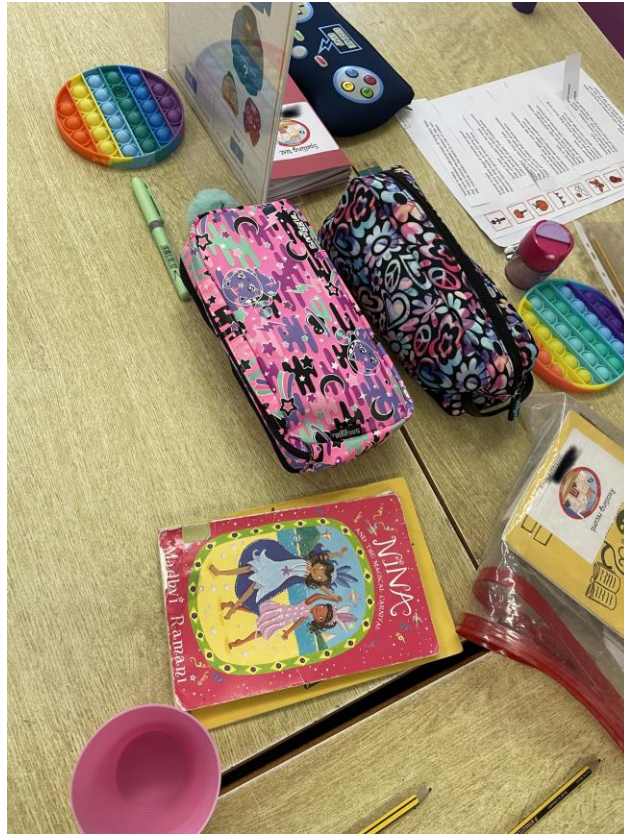
We appreciate, that during COVID, we asked children to bring in their own equipment. Unfortunately, this is now becoming an issue in school, with the amount of space this equipment is taking up on tables/in classrooms and also the distraction and clutter that this is causing for other pupils. We want all pupils to have access to a clear and tidy working space, with minimal distractions (this is particularly important for pupils with additional needs). Therefore, we will not be permitting pupils to have their own equipment in school from next week. So please, do not allow your children to bring in pencil cases, stationery or fidget toys.

We will provide any equipment that is required by the children to work in class.

If your child has been diagnosed with a Special Education Need, and they are subject to an Individual Provision Map, then we will work with you and your child to agree the best equipment for your child to access in school and we will ensure that they have access to this.

We thank you for your cooperation and understanding in this matter.









## Flu Vaccinations



Please see the information sent on Seesaw on 14th September regarding the process to opt in or opt out of this year's school flu vaccination programme. It is vital you log in to the portal at least a week before the nurses visit school on 11th October to advise if you wish your child(ren) to be vaccinated or not .

Please complete the below link to state whether you wish to consent or decline: <https://midlands/schoolvaccination.uk/flu/2023/worcestershire>

## Reception Open Mornings





If you are a parent looking for Reception places in September 2024 (or know someone who is) we are holding two open mornings for prospective parents to drop in and see the school in action. Please see the below leaflet:

**Is your child starting school  
next September?** 

**Sytchampton Endowed Primary School  
Open Mornings**

Wednesday 18th October and Tuesday 28th November  
2023

Appointments between 9.00am and 10.30 am

If you are looking for a nurturing school with a real family feel, then please do come and see our school in action! Sytchampton is a very special place and we would love to share it with you.

Please email our office to make an appointment on [office@sytchampton.worcs.sch.uk](mailto:office@sytchampton.worcs.sch.uk) or telephone on 01905 620418



For more information, please visit our website on  
[www.sytchampton.worcs.sch.uk](http://www.sytchampton.worcs.sch.uk)

School Council



Thank you so much to the people who donated to our MacMillan Coffee Afternoon! We have raised over £125 for such a great cause!



## Our Values



**Believe!**



We would like to kindly remind everyone of our core values. Please remember, when communicating with our staff (either in person, or digitally), our core values of **Kindness** and **Respect**. Whilst we appreciate that there may be times when you may be frustrated or angry about something, we can resolve things much more effectively if we are polite and respectful.

Thank you!

## Our Learning



Brambles Class have been learning about mass and comparing objects which are heavier, lighter and balanced. They have also been busy making 'Forest Friends' in Forest School! In their home corner, they have also been using imaginative play in the Hair Dressing Salon!

Oak Class have been busy learning all about Queen Victoria and Queen Elizabeth II in History. In PE they have also been demonstrating some amazing passing and receiving skills!

In Willow Class, Year 3 have been practising their climbing skills and making bug hotels in Forest School!

Elm Class were really lucky to have a visit from Adrian Smith, a qualified architect this week! He taught them all about the design process from the design, to planning approval to the build! It really helped to

bring our learning in DT alive! Thank you so much to Mr Smith for giving up his time to do this. Elm have also been learning about the Digestive System in Science.









Balanced





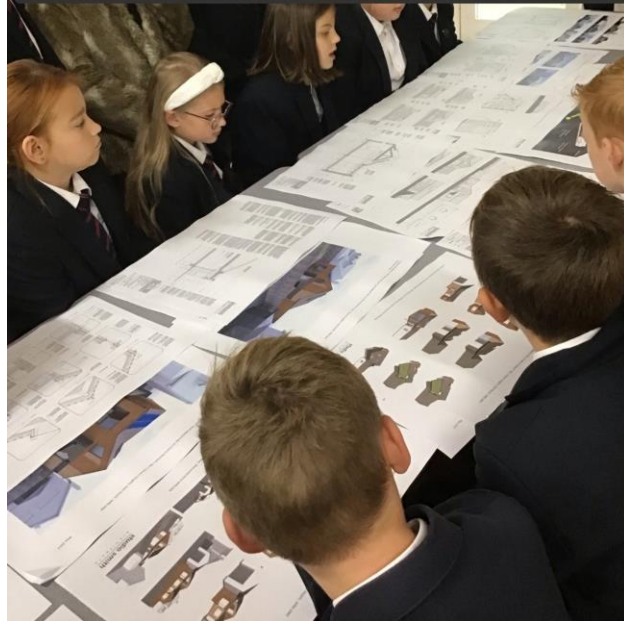


<https://sway.cloud.microsoft/wPprquH4ACZJF8mN#content=Z7HIFrgvaG8YAL>

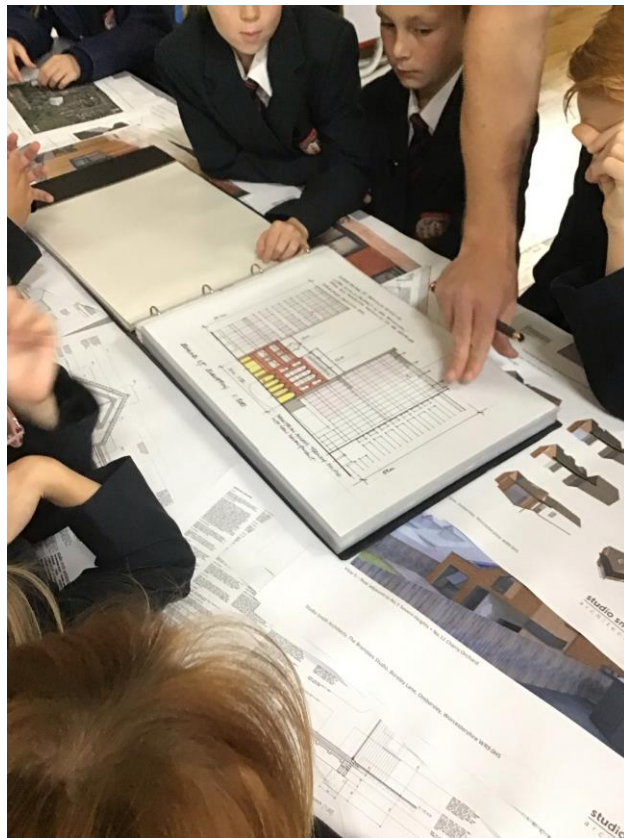




**Bringing our learning to  
life...with a visit from an  
architect.**

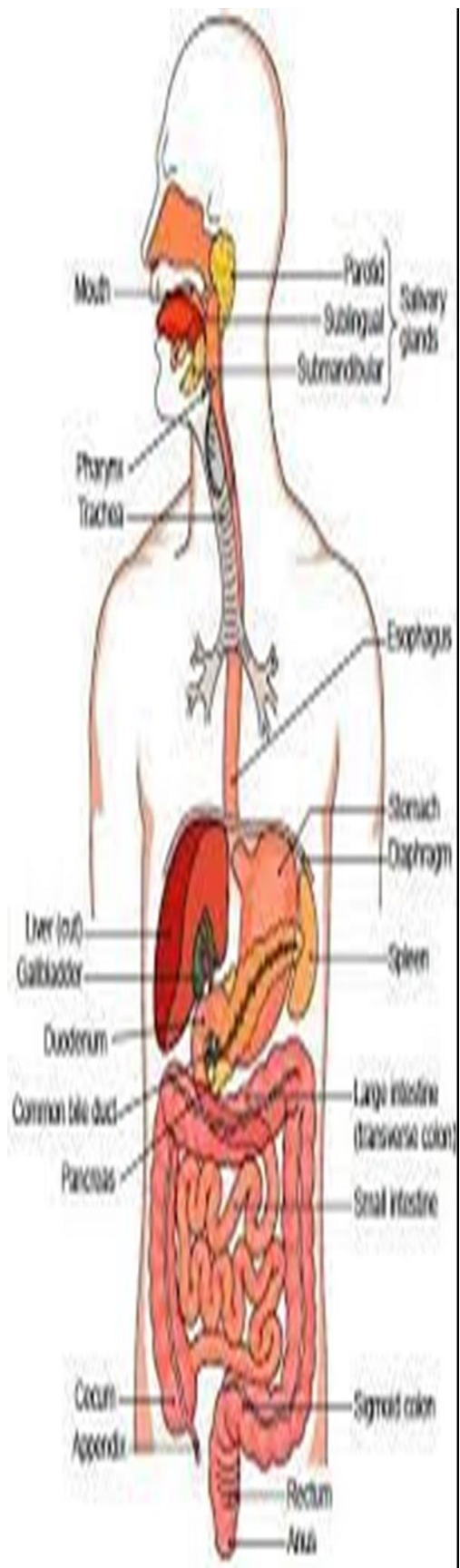


**From design-brief to  
planning approval to  
build!**

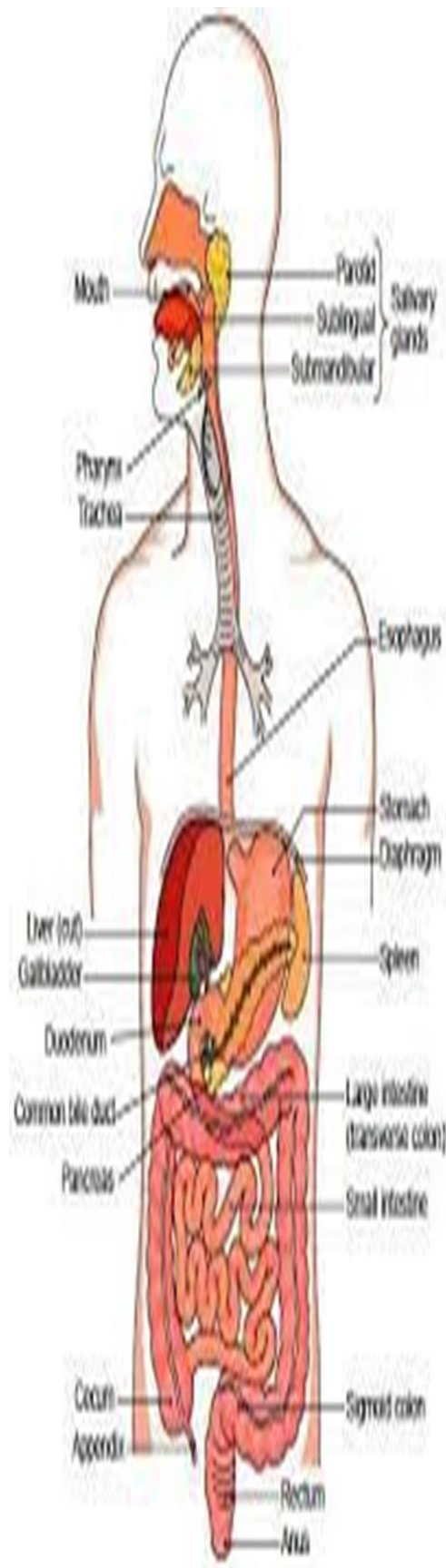


the digestive system





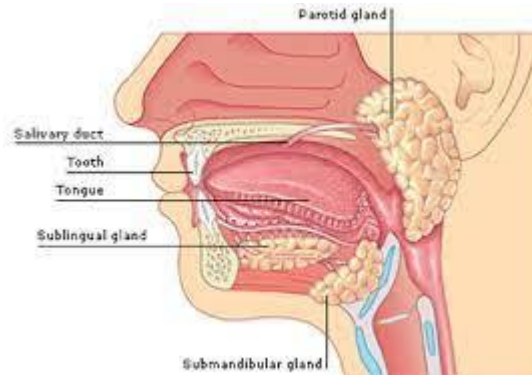
**By Samuel potts**





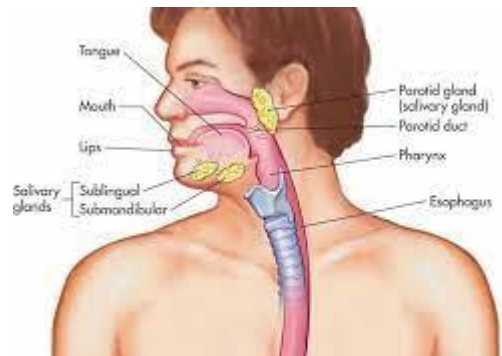
## mouth

The mouth is the start of the digestive system. It is lined with teeth that crush up the food with saliva (spit) that also helps in the process of crushing up the food. The food is then pushed towards the tongue which is then shaped into balls and is pushed into your oesophagus



## throat

Your oesophagus (throat) is a long tube that connects the mouth and stomach. Your oesophagus works by muscles pushing the balls of food towards your stomach. This process also extracts the taste from your food.



## stomach

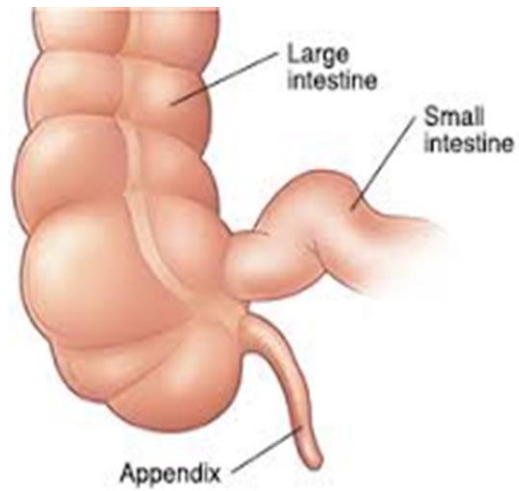
The main purpose of the stomach is to digest the food into mush. The stomach acid is so strong that the lining has to replace itself every 3 days! The food stays in your stomach for an average of 30 minutes (half an hour).





**appendix**

Its useless.





## Barnabee Tea



The children nominated for Barnabee Tea this week are:

- Brambles

Rivianna Finney for always trying her best and taking part in all of the activities on offer during COOL time. Well done Rivianna.

- Oak

Year 1: Lucy Slack for her excellent effort with her handwriting and letter formation.

Year 2: Isabella Hurst for her fantastic independent writing.

- Willow Class

Year 3- Faith Smith for her determination to improve. Working hard at school and at home!

Year 4- Elouise Gibbs for believing in herself. She has met the challenge of year 4, and is flying!

- Elm Class

Year 5- Jashan- You are amazing! Settled well, show determination and has completed all homework set.

Year 6- Libby- for overall excellence and has completed all homework set.

## Diary Dates



Please see below some of the key diary dates for this term as it stands right now. Please be aware that these are subject to change, but that we will notify you if this is the case. We will also keep the school website up to date:

[www.sytchampton.worcs.sch.uk](http://www.sytchampton.worcs.sch.uk)

Whilst the new build is still underway, we will not be in a position to invite parents in for Celebration Assemblies and will be conducting these in school with the children via remote links. As soon as we are able to use the hall again, we will let you know and invite parents back in. We are hopeful that the new build will be complete before Christmas and that we will be able to stage our Key Stage 1/Early Years Nativity and our Key Stage 2 Carol Service, so we have pencilled in dates for these.

Autumn Term 2023



<b>Monday 4<sup>th</sup> Sept/Tuesday 5<sup>th</sup> Sept</b>	TED Days (School Closed to pupils)
<b>Wednesday 6<sup>th</sup> Sept</b>	School Open to All Pupils EYFS (Brambles) in school until 11.30am
<b>Monday 11<sup>th</sup> Sept</b>	EYFS (Brambles) in school until 12.45pm
<b>Wednesday 13<sup>th</sup> Sept</b>	New IPM Targets set and shared with SEND families (Provision Map)
<b>Wednesday 13<sup>th</sup> Sept</b>	Elm Class Black Country Museum Trip
<b>Thursday 14<sup>th</sup> Sept</b>	EYFS (Brambles) in school full time
<b>Friday 15<sup>th</sup> Sept</b>	Celebration Assembly (No parents)
<b>w/c Monday 18<sup>th</sup> Sept</b>	School Council/Wellbeing Champions Elections
<b>Friday 22<sup>nd</sup> Sept</b>	Barnabee Tea Parent Newsletter 9.00am SEND Parent Forum
<b>Monday 25<sup>th</sup> Sept</b>	Commando Joes Activity Day
<b>Wednesday 27<sup>th</sup> Sept</b>	Swimming Lessons Start (Willow Class)
<b>Friday 29<sup>th</sup> Sept</b>	Celebration Assembly (No parents)
<b>Monday 2<sup>nd</sup> Oct</b>	Harvest Donations Week
<b>Wednesday 4<sup>th</sup> Oct</b>	MacMillan Coffee Morning
<b>Friday 6<sup>th</sup> Oct</b>	Barnabee Tea Parent Newsletter
<b>Tuesday 10<sup>th</sup> Oct</b>	World Mental Health Day
<b>Wednesday 11<sup>th</sup> Oct</b>	Whole School Flu Vaccinations
<b>Friday 13<sup>th</sup> Oct</b>	Harvest Assembly/Celebration Assembly (Arrangements tbc)
<b>Monday 16<sup>th</sup> Oct</b>	Parent Survey
<b>Tuesday 17<sup>th</sup> Oct</b>	Lloyds Educational Foundation 300 Year Celebration (Dress Up)
<b>Wednesday 18<sup>th</sup> Oct</b>	09.00-10.30am Prospective EYFS Parents Open Morning
<b>Tuesday 24<sup>th</sup> Oct</b>	18.30 PTA AGM (Spice Fusion)
<b>Thursday 26<sup>th</sup> Oct</b>	17.45 – 19.45 PTA Monster's Ball (Community Hall)
<b>Thursday 26<sup>th</sup> Oct</b>	18.30 Full Governing Board
<b>Friday 27<sup>th</sup> Oct</b>	09.00 – 10.00 SEND Parents Coffee Morning
<b>Friday 20<sup>th</sup> Oct</b>	Barnabee Tea Parent Newsletter
<b>Monday 30<sup>th</sup> Oct – Friday 3<sup>rd</sup> Nov</b>	HALF TERM
	New Building Opening Ceremony (Dates tba)
<b>Thursday 9<sup>th</sup> Nov</b>	14.00 Parent Voice Meeting 09.45 – 11.45 KS2 Cross Country
<b>Friday 10<sup>th</sup> Nov</b>	14.45 Celebration/Remembrance Assembly (Arrangements tbc)
<b>w/c Monday 11<sup>th</sup> Nov</b>	Anti-Bullying Week
<b>Friday 17<sup>th</sup> Nov</b>	Barnabee Tea Parent Newsletter 09.00 SEND Parent Coffee Morning Children In Need
<b>Wednesday 22<sup>nd</sup> Nov</b>	15.00-18.00 Parent Consultations (Face To Face) All Year Groups
<b>Thursday 23<sup>rd</sup> Nov</b>	15.00 – 17.00 Parent Consultation (Face To Face) All Year Groups
<b>Friday 24<sup>th</sup> Nov</b>	14.45 Celebration Assembly (Arrangements tbc)
<b>Tuesday 28<sup>th</sup> Nov</b>	09.00 – 10.30am Prospective EYFS Parents Open Morning
<b>Wednesday 29<sup>th</sup> Nov</b>	New IPM Targets set and shared with SEND families (Provision Map)
<b>Friday 1<sup>st</sup> Dec</b>	Barnabee Tea Parent Newsletter
<b>w/c 4<sup>th</sup> Dec</b>	Assessment Week

## Autumn Term 2023

	Rags To Riches Textile Collection
<b>Weds 6<sup>th</sup> Dec</b>	Willow Last Swimming Lesson
<b>Friday 8<sup>th</sup> Dec</b>	14.45 Celebration Assembly (Arrangements tbc)
<b>Monday 11<sup>th</sup> Dec</b>	EYFS/KS1 Nativity Dress Rehearsal to School (tbc)
<b>Tuesday 12<sup>th</sup> Dec</b>	EYFS/KS1 Nativity to Families (tbc)
<b>Wednesday 13<sup>th</sup> Dec</b>	Whole School Pantomime Trip (Jack and The Beanstalk)
<b>Friday 15<sup>th</sup> Dec</b>	Barnabee Tea Parent Newsletter
<b>Wednesday 20<sup>th</sup> Dec</b>	Christmas Lunches Christmas Jumper Day
<b>Friday 22<sup>nd</sup> Dec</b>	Christmas Parties and Special Visitor 13.30 – 14.30 KS2 Carol Concert (tbc) 14.30 School Closes for Christmas (No WAC)

## PTA

SYTCHAMPTON ENDOWED PRIMARY SCHOOL

**PTA AGM**

PARENT TEACHER ASSOCIATION  
ALL WELCOME

**Tuesday 24th October 2023**  
**Spice Fusion Restaurant**  
*A449 Ombersley Rd, DY13 9SW*  
18:00 Arrival  
18:30 - 19:30 - AGM  
*Followed by a meal for those who would like to stay*



SYTCHAMPTON ENDOWED PRIMARY SCHOOL

# PTA AGM

## AGENDA

**Tuesday 24th October 2023**

*Welcome & Introductions*

*Previous AGM Minutes*

*Headteacher's Report*

*Chairman's Report*

*Treasurer's Report*

*Lottery Accounts*

*Resignation & Signing of New Members*

*Upcoming Dates for the Diary*

*AOB*





Sytchampton Primary School



# MONSTER BALL

Sytchampton Village Hall

THURSDAY 26th OCTOBER 2023

KS1 - 17:30 - 18:45 (Parent Supervision Required)

KS2 - 18:30 - 19:45 (Parent Supervision Required)

Siblings are welcome to join both sessions

£5 Per Child Entry Fee to Include Disco, Hotdog & 1 Drink

Adult Snacks, Drinks & Child Sweet Shop Available at Extra Cost

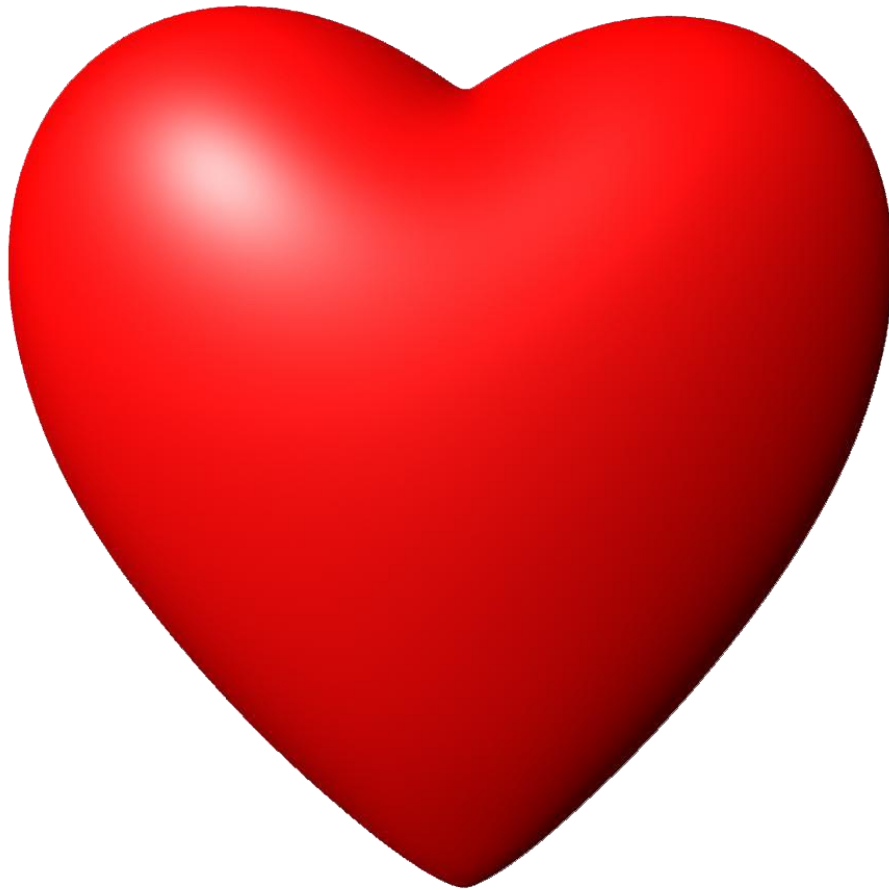
**COSTUMES ENCOURAGED, BUT NO MASKS PLEASE**

Please use child's name and class as payment reference

Sytchampton PTA Account No: 71170120

Sort Code: 40-19-27

## Pre-Loved Uniform

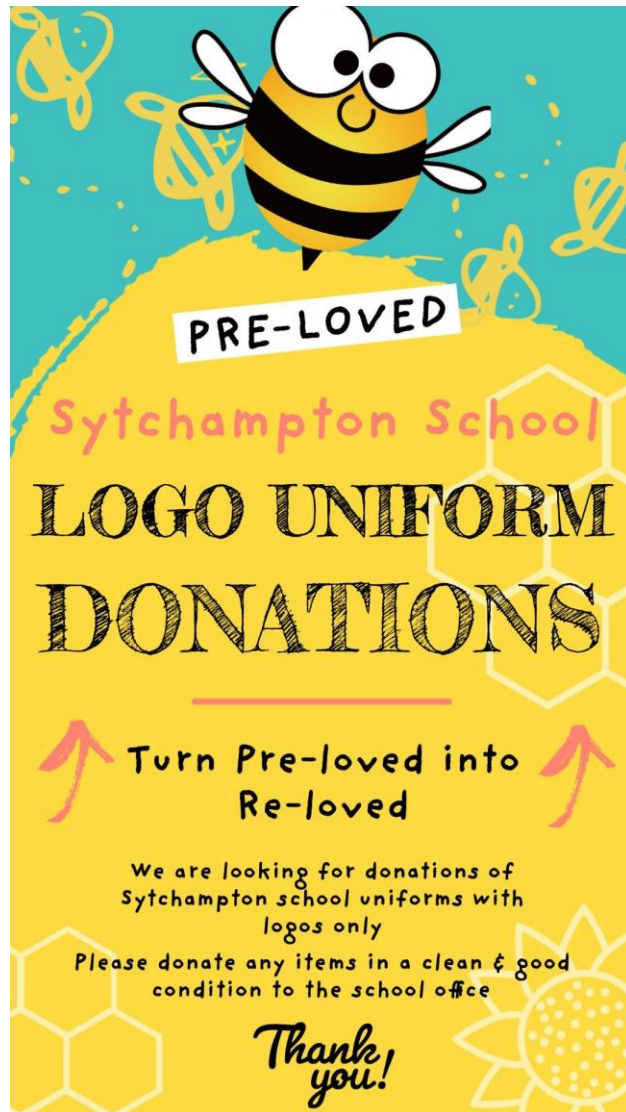


During these difficult financial times, it is important to remember that the PTA run a Pre-Loved Uniform Scheme. This is open to anyone.

The PTA are asking for donations to help this scheme and, if you have any of the following items, please could you donate them to the PTA:

- Size 5-6 (26")Cardigans with logo
- Sweatshirts with logoPolo shirts with logo

- Size 7-8 (28")Cardigans with logo
- Sweatshirts with logoPolo shirts with logo
- Size 9-10 (30")Cardigans with logo
- Sweatshirts with logoPolo shirts with logo
- Girls & Boys Blazers with logo all sizes
- Zipped Blue hoodies with logo all sizes.





## Attendance



Thank you so much to everyone for making a big effort to be in school during the first few weeks. We really want to make the most of every opportunity to help your child reach their full potential, so by ensuring that they are in school, you will be supporting us in achieving this. Please refer to the Attendance Policy on our school website.

Yr	Present	Absent	Unauthorised Absence
1	20/20	0/0	0/0
2	20/20	0/0	0/0
3	20/20	0/0	0/0
4	20/20	0/0	0/0
5	20/20	0/0	0/0
6	20/20	0/0	0/0
7	20/20	0/0	0/0
8	20/20	0/0	0/0
9	20/20	0/0	0/0
10	20/20	0/0	0/0
11	20/20	0/0	0/0
12	20/20	0/0	0/0
Total	240	0	0